

NORTH 1/4 COR SEC 3

062650  
RECEIVED  
LARAMIE COUNTY  
CHEYENNE, WY.

CERTIFIED LAND CORNER RECORDATION 09 OCT 5 PM 3 01

DESCRIPTION OF CORNER EVIDENCE FOUND, AND ORIGINAL RECORD (If known)

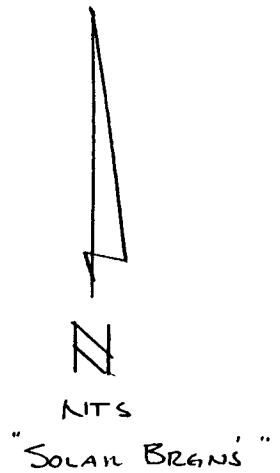
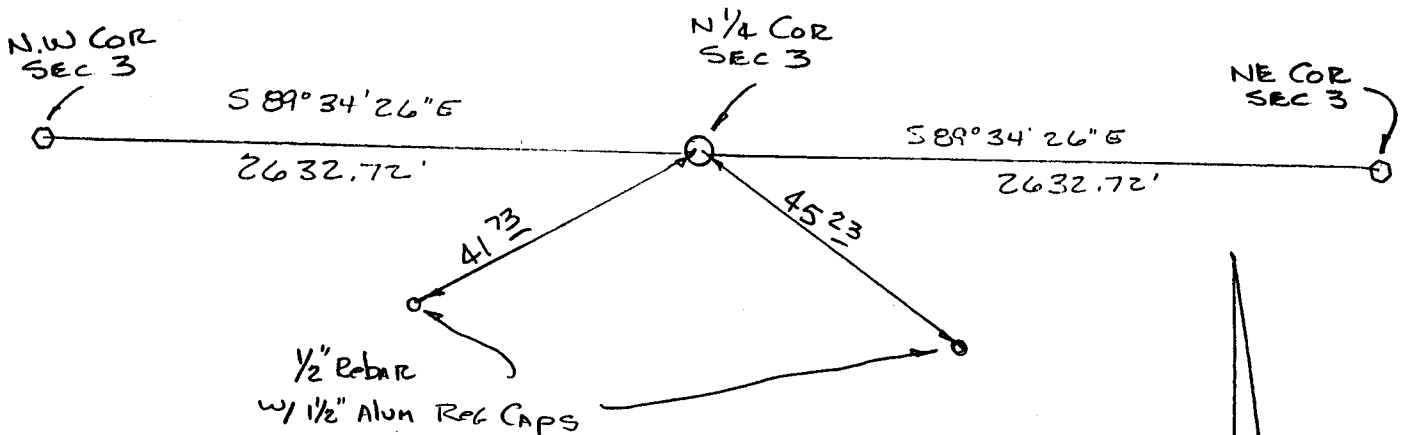
NO EVIDENCE OF ORIGINAL CORNER FOUND. THE ORIGINAL GLO NOTES CALL FOR A 16X12X6 GRANITE STONE. I CALLED THE CORNER LOST, AND RE-SET BY SINGLE PRO-BATA.

DESCRIPTION OF MONUMENT AND ACCESSORIES ESTABLISHED TO PERPETUATE THE ORIGINAL LOCATION OF THIS CORNER:

AT THE CALCULATED POINT FOR THE N 1/4 COR, SET A 5/8" X 30" REBAR WITH A CORPS OF ENGINEERS BRASS CAP ON TOP & REFERENCED AS SHOWN BELOW.

JULY 10 1989

SKETCH, WITH COURSE AND DISTANCE TO ADJACENT CORNER IF DETERMINED IN THIS SURVEY. (May Sketch or Paste Reproduction on Reverse Side.)



I, Wallace C. Muscott certify that I have carefully performed or reviewed the work done on the diagrammed corner as reported on this recordation form and approve the same.

Wallace C. Muscott  
Signature of Surveyor

3830  
Registration No.

STATE OF WYOMING,  
Office of Clerk and Recorder,  
County of \_\_\_\_\_

This "corner record" was filed for record on the \_\_\_\_\_ day of \_\_\_\_\_, 19\_\_\_\_, was noted on the cross-index plat and is assigned page No. \_\_\_\_\_, in book No. \_\_\_\_\_.

County Official			
Cross Index No. <u>A-15</u>	T. <u>17N</u>	R. <u>67W</u>	Mer. <u>6th</u>
_____	T. _____	R. _____	Mer. _____
_____	T. _____	R. _____	Mer. _____
_____	T. _____	R. _____	Mer. _____
_____	T. _____	R. _____	Mer. _____
_____	T. _____	R. _____	Mer. _____